



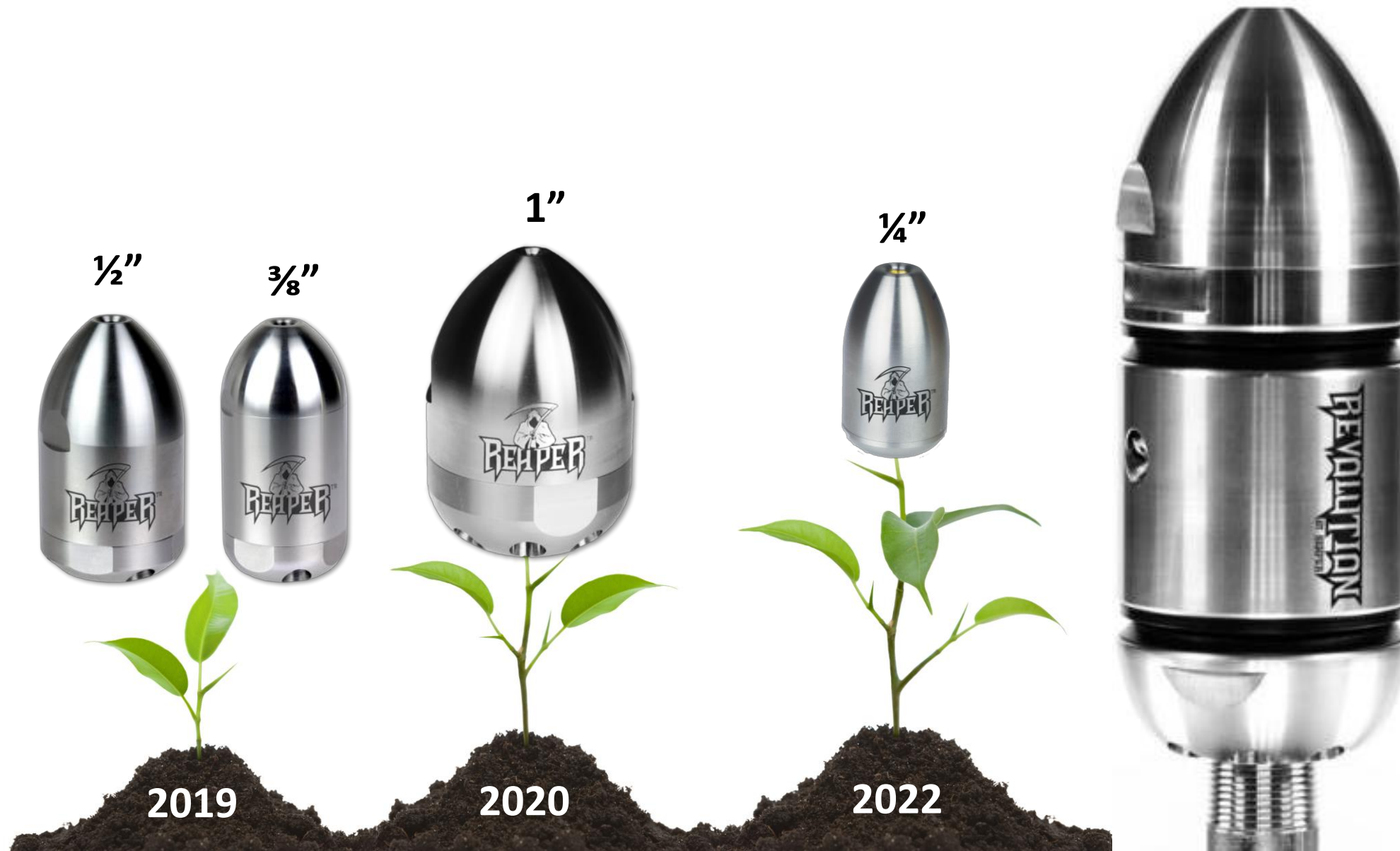
# THE SEWER JETTING REVOLUTION IS HERE!

Cut like the Reaper™  
and clean with the power of the

**REVOLUTION**  
BY REAPER

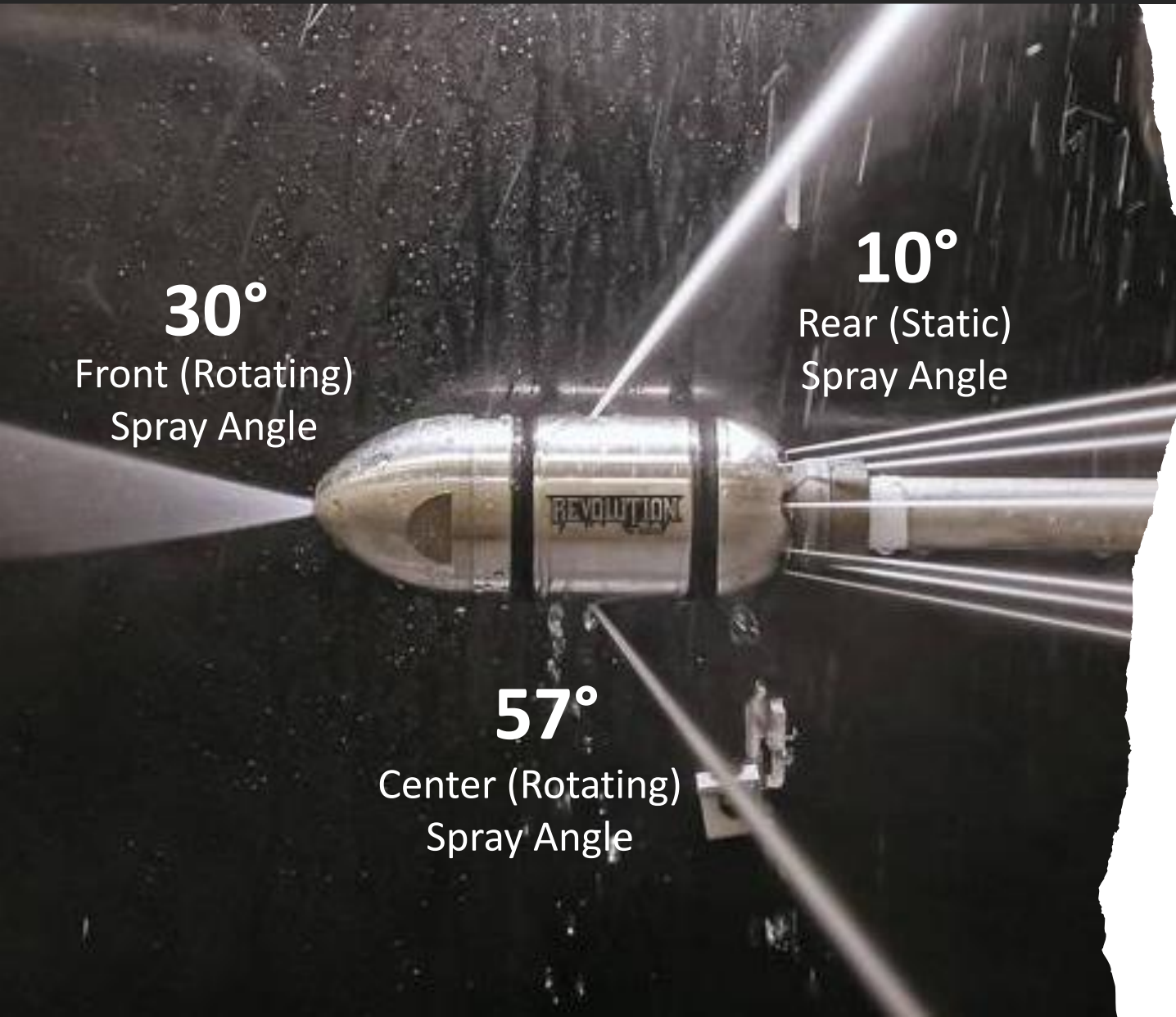
- Municipal Sewer Cleaning
- Blockage Removal
- FOG Removal
- Root Removal

# REAPER™ FAMILY TREE





# BUILD AND SPRAY ANGLES



**Built for 6" to 36" Pipes**



**Powerful Rotating Tip**



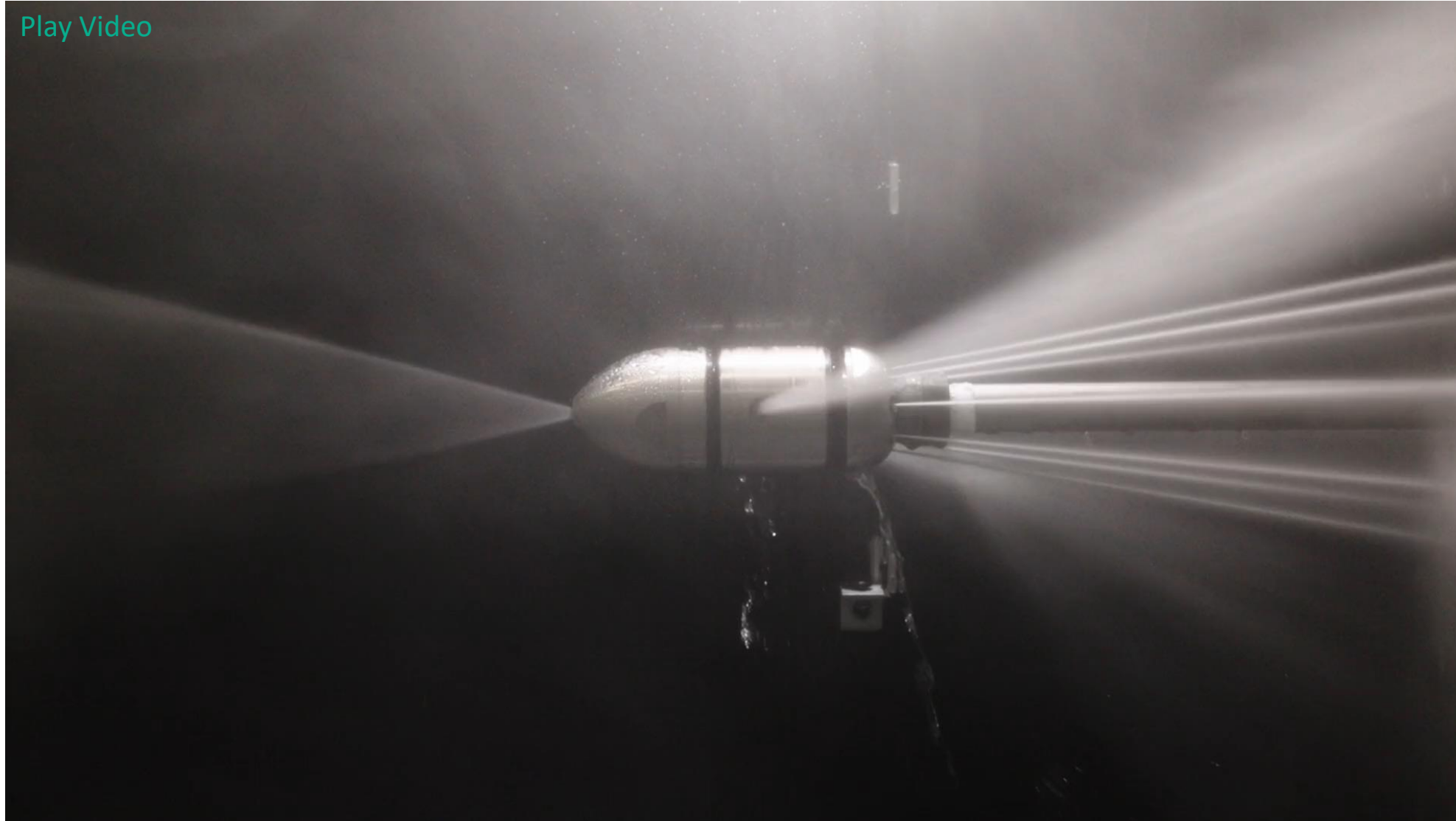
**Center Rotating Jets**



**Rear Static Jets**

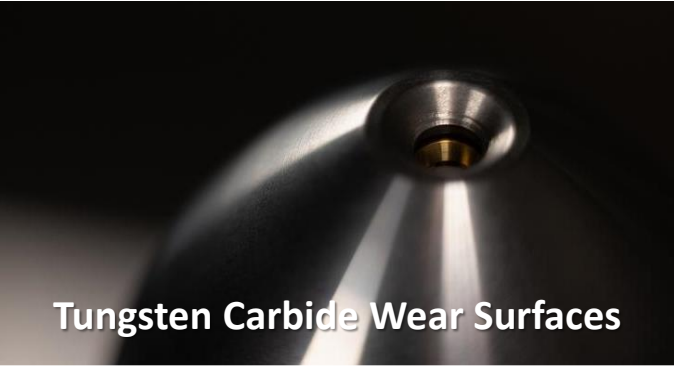
# JETTING POWER

[Play Video](#)



# EXPLODED VIEW

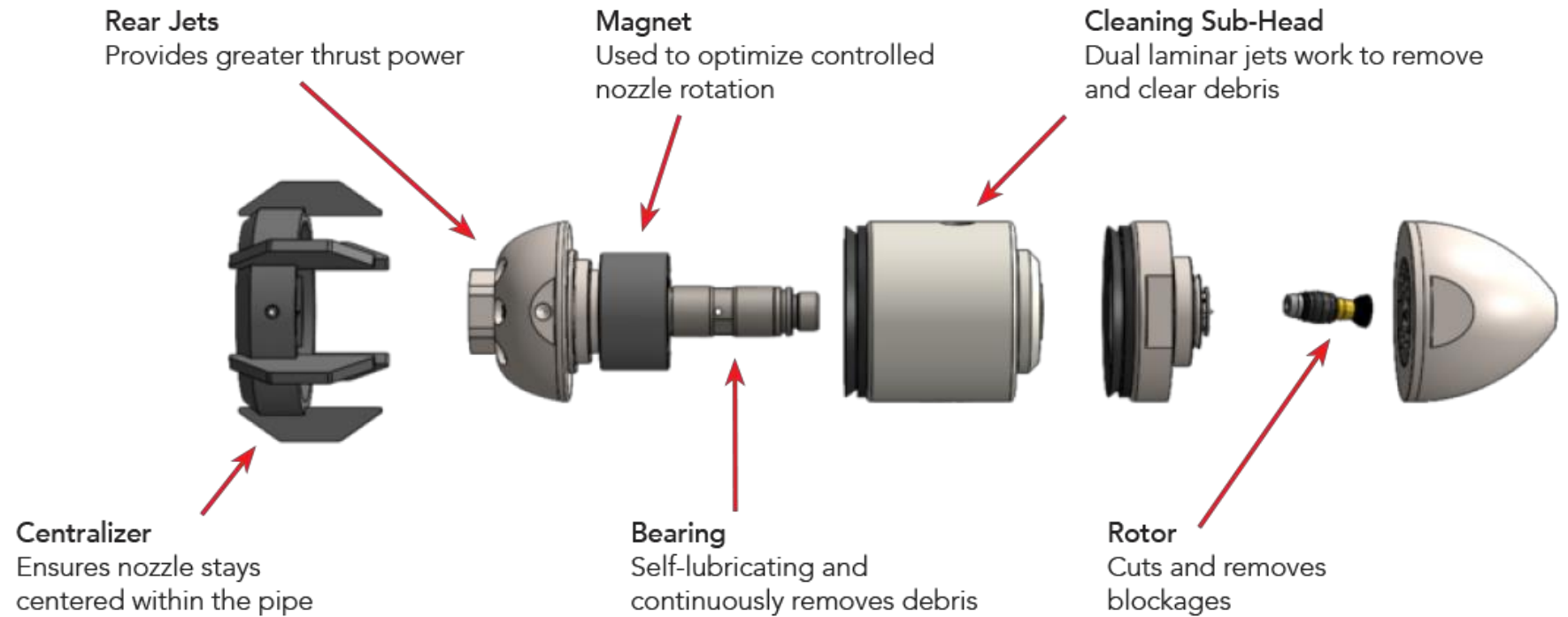
**Tungsten Carbide Wear Surfaces**



**360° Rotating Sub-Head**



**Stainless Steel Housing**



# PRODUCT SPECIFICATIONS



3.5" (89 mm)

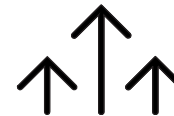
8.5" (216 mm)



Max Water Temp  
**180°F** (+82°C)



Max Inlet Pressure  
**1,000 PSI** (69 bar)  
**2,500 PSI** (172 bar)



Flow Range  
**40-80 GPM** (152-303 LPM)



Inlet Connection  
**Thread 1" NPT** (BSPP)



Rotation Speed  
**100-200 rpm**

## Centralizer



SPECS W/CENTRALIZER

**19 lbs.** | **H = 9.25"** | **W = 5"**



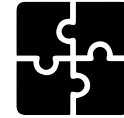


# REVOLUTION™ EXECUTION



*"Our operators were impressed by the nozzle's performance. It is EXCELLENT at cleaning the pipe walls. This nozzle is now our first choice for pre-jetting for CCTV inspections."*

*Andy Keller CSD —  
Big Bear City*



**All-in-One Tool**

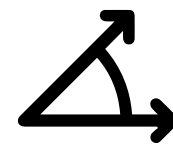


**Greater Impingement**

Allows you to cut through blockages fast!



**360° Superior  
Cleaning Power**



**Optimized Spray Angles**

Provide maximum pulling and  
thrusting power



# 360° SUPERIOR CLEANING POWER



*"It cut a two-day job to one day.  
Lines that take three passes only  
took one pass."*

David Feuerstacke – JG Environmental



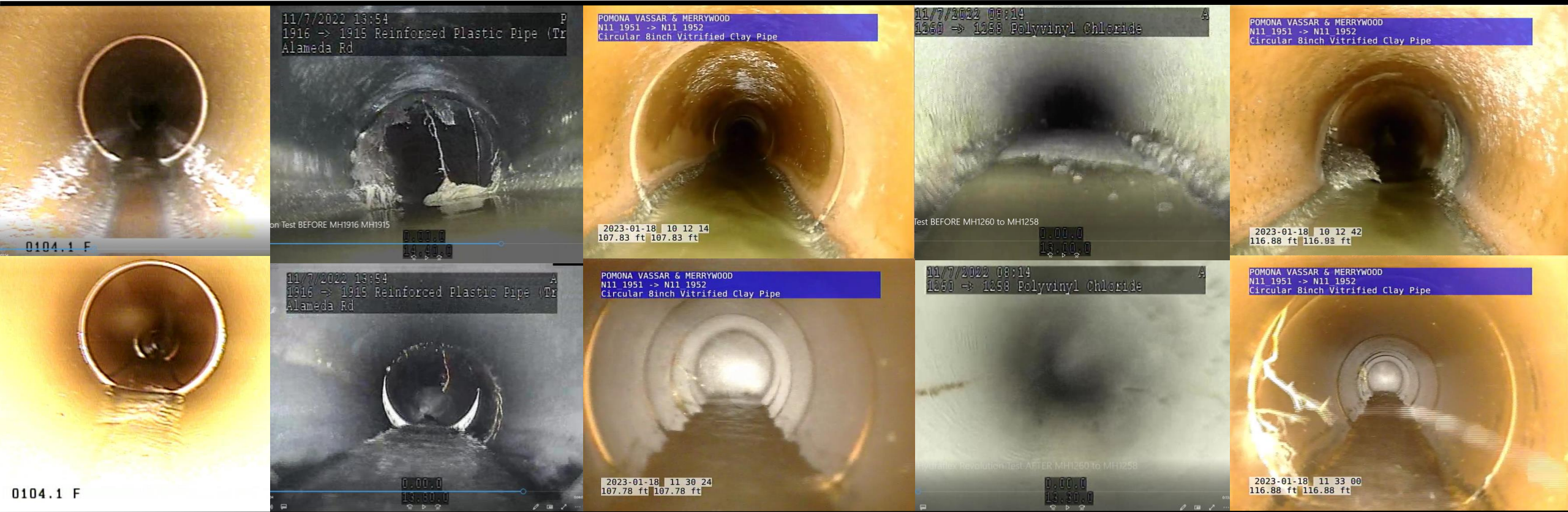
**More Debris Removed**  
On first pass!



# BEFORE AND AFTER

*"Turned a full day job into a half day job."*

Juan Martinez – Trinity Subsurface





# REVOLUTION VS. COMPETITION

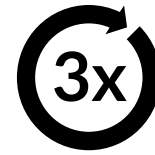


## REVOLUTION % IMPROVEMENT (FOAM/DEBRIS REMOVED) OVER COMPETITION

WARTHOG WGR-SWT (SWITCHER)	WARTHOG WG (CLASSIC)	KEG AQUA-POWER 7000	ENZ BULLDOG
186.85%	1508.11%	2595.64%	8799.89%
Removed <b>2.87 X</b> more debris	Removed <b>16 X</b> more debris	Removed <b>26 X</b> more debris	Removed <b>27 X</b> more debris



# UNMATCHED PERFORMANCE



**More Debris  
Removed**

On first pass!



**Use 25%  
Less Water**



**Work Faster**

Clear blockages and  
clean the pipe at the  
same time!

# JOIN THE REVOLUTION™



**Longer Life**



**1 Year Warranty**



**Field & Shop Repairable**



**Premium Materials**

Built to outlast competition!

# REPAIR KITS AND FLOW RATES

Front Rotor Block Kit



Rear Jet  
Rebuild Kit



Side Jet  
Rebuild Kit



Centralizer  
Installation Kit



Overhaul Kit



## REVOLUTION BY REAPER NOZZLE - IDEAL FOR 6" - 36" OR 152MM - 914MM PIPES

NOZZLE SIZE	1" NPT NOZZLE PART NUMBER	1" BSPP NOZZLE PART NUMBER	FLOW RATE CHART			
			@1,000 PSI (69 Bar)	@1,500 PSI (103 Bar)	@2,000 PSI (138 Bar)	@2,500 PSI (172 Bar)
40.0	1003417-400	1003580-400	23.0 GPM (87.1 LPM)	28.2 GPM (106.7 LPM)	32.5 GPM (123.0 LPM)	36.4 GPM (137.8 LPM)
60.0	1003417-600	1003580-600	33.0 GPM (124.9 LPM)	40.4 GPM (152.9 LPM)	46.7 GPM (176.8 LPM)	52.2 GPM (197.6 LPM)
80.0	1003417-800	1003580-800	45.0 GPM (170.3 LPM)	55.1 GPM (208.6 LPM)	63.0 GPM (238.5 LPM)	71.2 GPM (269.5 LPM)



**GOT QUESTIONS?  
WANT TO ORDER?**



**Contact us:**

**1800 437 736**

**[www.trenchless-supplies.com.au](http://www.trenchless-supplies.com.au)**